

Liberate Business Intelligence

Liberate BI is the latest business intelligence tool available within the **Liberate** legal software suite. **Liberate BI** contains a range of user-definable graphs and Key Performance Indicators that are dynamically updated to provide users with a real-time view of their firm's business.

Your Personal Window on Your World

The **Liberate BI** access portal provides users with a common and speedy interface to all the performance measures they need to work more effectively and monitor key business metrics.

Proactive Practice Management

Liberate BI provides users with the ability to access, select and display key information directly relevant to the performance of their practice. Frequently used displays are stored for future re-use and favourites are automatically loaded at log-on time. For the first time users have the high-quality and timely information they need to proactively manage their business.

Improved Management Control

Selected Key Performance Indicators (KPI's) are automatically refreshed and monitored against user defined tolerance levels. KPI's outside of tolerance levels are highlighted. This early warning system enables users to take immediate remedial action - no more waiting until month-end to have a problem brought to your attention. **Liberate BI** delivers the information on which to base timely and informed business decisions.

Individual Information - Relevant and Secure

Sophisticated permissions based security features within **Liberate BI** ensure users can only select and display information relevant to their area of the business - bringing focus and improved management control to every level within the organisation.

Speed and Efficiency

Why waste time and money printing historical reports or merging data into spreadsheets and graphs which are out-of-date by the time they are created. **Liberate BI** eliminates all this wasted effort. Graphs and KPI's are available at the desktop - dynamically updated to provide users with a real-time view of their business.

Unlimited Flexibility

All **Liberate** modules utilise a single Microsoft SQL server database, allowing data anywhere within the practice to be analysed, graphed and displayed - directly on the desktop. Users select from a range of pre-built options or can define their own custom queries, graphs and KPIs- vital flexibility in today's constantly changing environment.

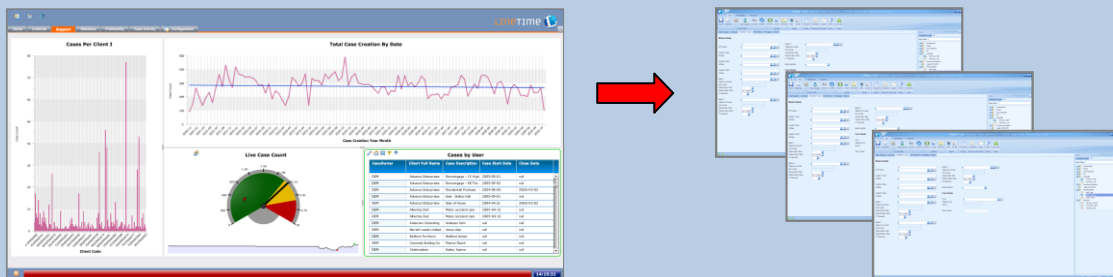
User Friendly Modern Technology.

Liberate BI utilises the very latest in development technology – an option is available for the iphone. **Liberate BI** takes information from the central practice database and allows users to build their own personal view of the business. The use of standard SQL techniques gives end user technical teams a high degree of independence.

Liberate Business Intelligence

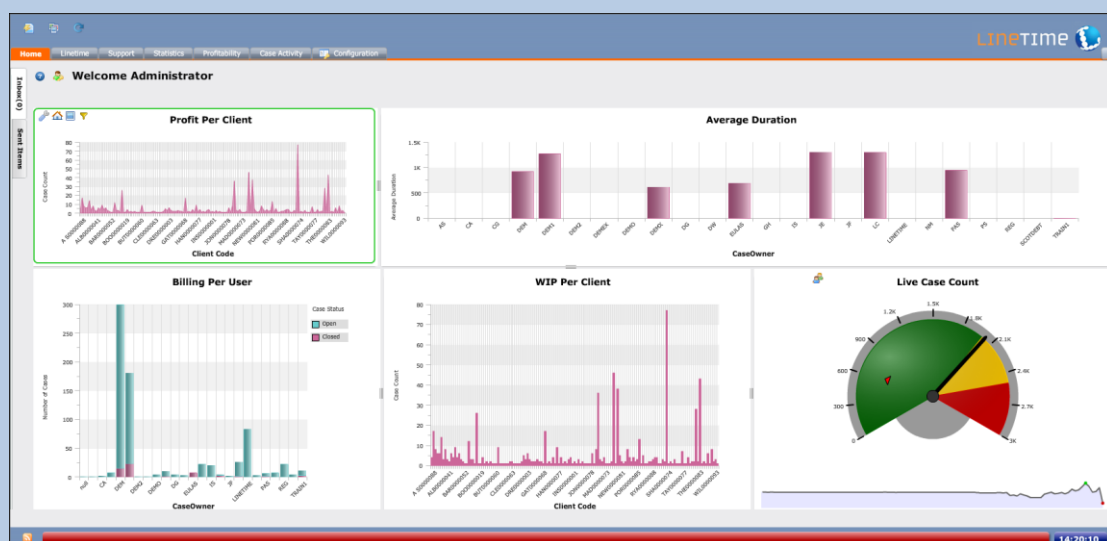
- See what is happening within your business - as it happens
- Trend analysis
- Live key performance indicators – user defined tolerances

The ability to drill down to the low level data takes digital dashboards to a new level of functionality. Users can navigate from high-level summaries to more detailed displays or click “sideways” to view associated data and reports. All of this in **real time**.



Liberate BI is not just confined to one database. Specialised dashboards can combine databases such as PMS and CMS with other business functions e.g. HR and CRM. This gives the widest possible view of the operation enabling management to drive the business forward.

- When linked to case management drill directly into the case itself
- Manage risk – assess potential problems
- Monitor performance



- Browser based – run from ANYWHERE
- Fine tune your business